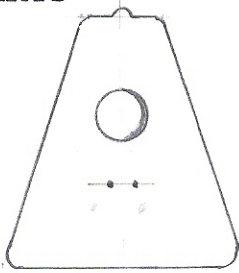




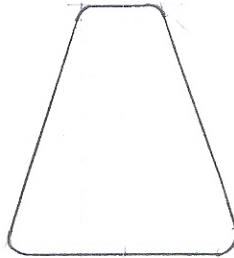
ELELE

WOLFELELE UKELELE KIT ASSEMBLY INSTRUCTIONS

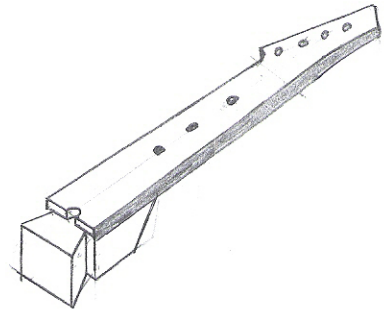
PARTS



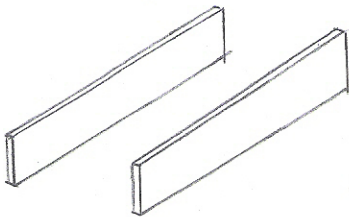
top



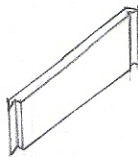
back



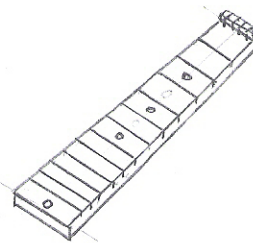
neck



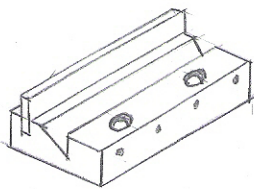
sides



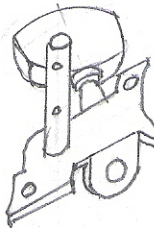
bottom



fingerboard



bridge



tuners 4x

2 - #6 x $\frac{3}{4}$ " - bridge
4 (5 baritone) - #6 x $1\frac{1}{2}$ " - fingerboard

screws

strings



GREEN



CLEAR



BLACK
END



GREEN

You will need:

- ❖ #1 (small) cross Phillips screw driver, magnetized if possible
- ❖ small bottle of yellow (only) wood glue
- ❖ flat file or sanding block
- ❖ non-stick flat table or work surface
- ❖ scissors



Step 1 (diagram 1). Gluing the Neck to the Body

Take the neck (2) and top of the body (1). Observe that there is a small nub on the body that fits perfectly into the hole on the neck. Put a bean-size drop of glue on the underside of the neck at 3. Glue the neck to body so that the nub lines up with the hole and the entire ukulele is lying flat upside-down on the table. To align the neck with the body place both of the sides (4) on either side of the neck so they reach just below the sound hole. Use the sides to position the neck so there are equal spaces on either side of the sound hole (a). With out shifting the neck maintain light downward pressure for at least five minutes while the glue dries. Do not pick it up or you'll get a crooked ukulele! Plus, there is more to do!

Step 2 (diagram 2). Gluing Sides

Now its time to glue the sides onto your ukulele. Diagram 2 shows how the sides (4) fit snugly into the corners of the neck block (3). Glue them in one at a time. Apply glue to the sides of the neck block (3) and along the bottom edge of one side. Be sure that the side is parallel to the edge of the body for the whole length of the instrument (b). Once the side is aligned pinch it to the neck block with one hand and apply gentle downward pressure with the other for at least 5 minutes while the glue dries. Repeat for the other side.

Step 3 (diagram 3). Gluing Bottom

After both sides are installed you may glue on the bottom (5). Put glue on the ends of the sides at (c) and along the bottom edge of the bottom piece. Gently press the bottom into the sides and downward for 5 minutes while the glue dries. Do not pick it up! There is still more to do!

Step 4. Leveling Joints

Using a small file or sanding block level off all joints between the bottom and the sides and the sides and the neck block. Stroke inwards at the bottom corners and across the neck joint. These joints must be perfectly flat and smooth for the back to fit properly.

Step 5 (diagram 4). Gluing Back

Once the joints have been smoothed, run a small but continuous bead of glue all around the tops of the bottom and the sides. Put a bean sized drop of glue on the neck block but stay below the ends of the sides. Gluing this spot well is very important for holding the instrument together. Align the top of the back with the small top edge of the neck block just so the ends of the sides are covered. Slowly pivot the back down onto the sides and bottom while looking down on it from above to be sure the back of the body and top of the body are aligned. Maintain gentle downward pressure at the neck end with one hand and with spread fingers press down the middle of the back and bottom corners with the other. The bottom corners have a tendency to rise and need to be pressed down. Too much pressure will cause the back to shift. After 5 minutes carefully lift the instrument and inspect the back joint all around. Squeeze and hold wherever necessary. The back has to fit snugly to resist the pull of the strings.



Step 6.

Installing Tuners

Time to put in the tuners. Place the ukulele upside down with the head hanging over the edge of the table. Do not empty the bag of tuners onto the table! The screws are very tiny and can be easily lost. Drop the tuner post through the first of the larger holes in the head. Align the tiny holes in the tuner with the tiny holes in the head and very carefully get two tiny screws and your #1 Phillips screw driver and attach the tuner to the head. Repeat this for all 4 tuners.

Step 7.

Installing Fingerboard

Now lay ukulele top side up. Support the neck by placing a block or the bridge underneath the head making sure the body stays flat on the table. Place the finger board onto the neck so that the holes line up with the holes in the neck. Be sure that the finger board is centered on the neck and then screw it down with the 4 small screws (5 if you are building a baritone) and the #1 Phillips screw driver.

Step 8.

Installing Bridge

Install the bridge on the two holes with the two longer screws. The small string holes in the bridge should be facing the bottom end of the ukulele. Snug up the screws until they are tight. The bridge does not need to be glued.

Step 9 (diagram 4).

Stringing

Place the ukulele in front of you so the tuners are on the left. Keep the head supported. The order of the strings from bottom to top is green, clear, black, green. At one end of a green string tie a double knot and then pull the string through the closest hole in the bridge. Pull the string tight up past the tuner and clip off 5 cm past the tuner. Turn the bottom tuner so the hole is parallel to the frets. Push the string through the hole in tuner post from the farthest side toward you so that 5mm of string is poking out, using the lowest holes when possible. Turn the tuner knob counter-clockwise and wind the string downwards on the tuner post. Repeat in order of the other strings. Do not fully tune the ukulele for 2 hours so the glue can set.

Standard Tunings:

soprano, alto, tenor: G C E A baritone: D G B E

However don't be afraid to experiment!

HAVE FUN!!!



Ukulele Kit Diagrams

Diagram 1.

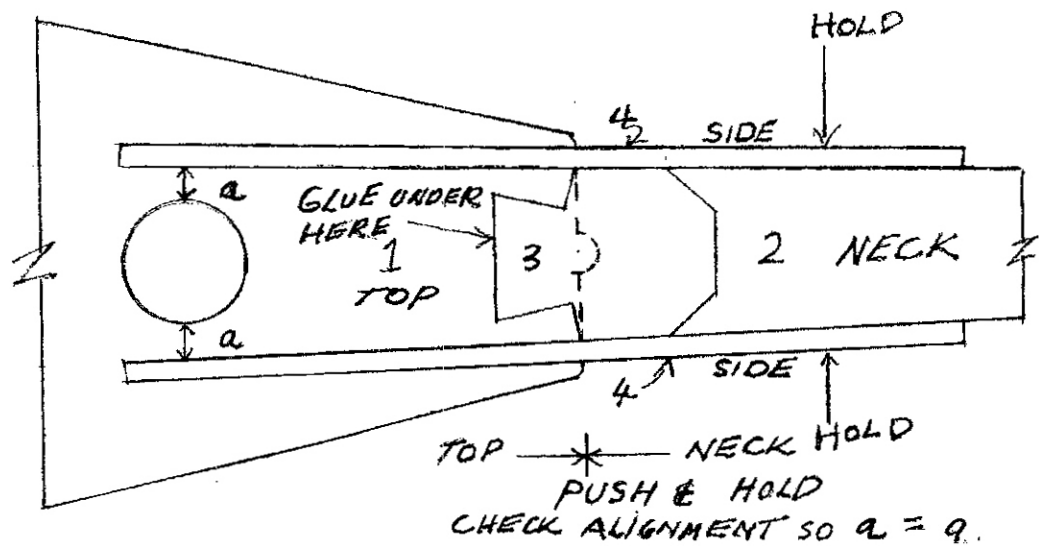


Diagram 2.

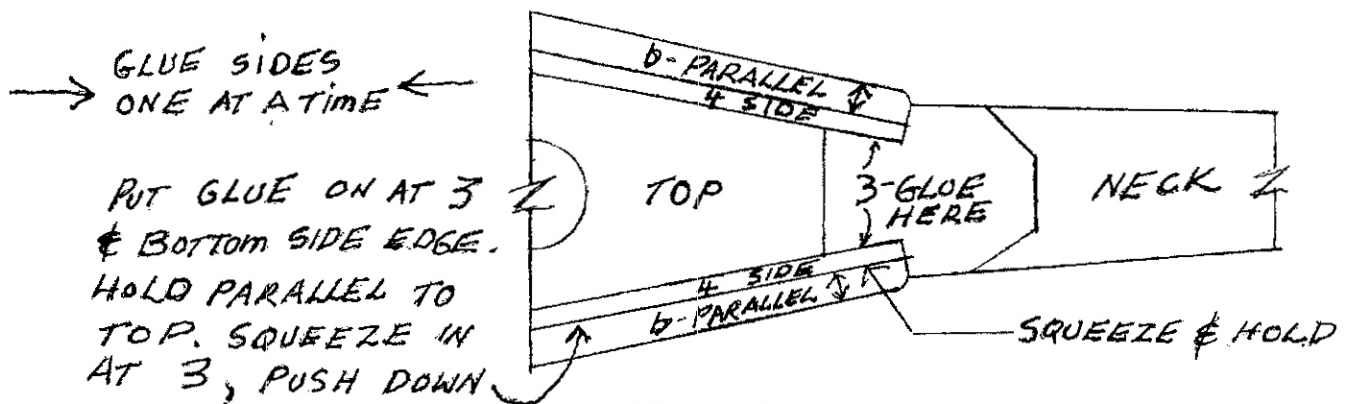


Diagram 3.

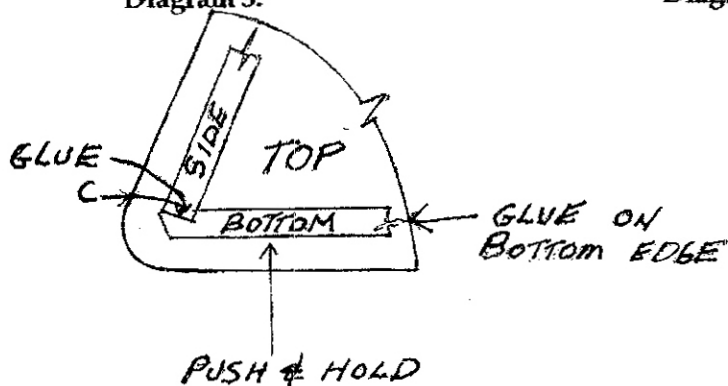


Diagram 4.

